

# TREX ENHANCE® RAILING

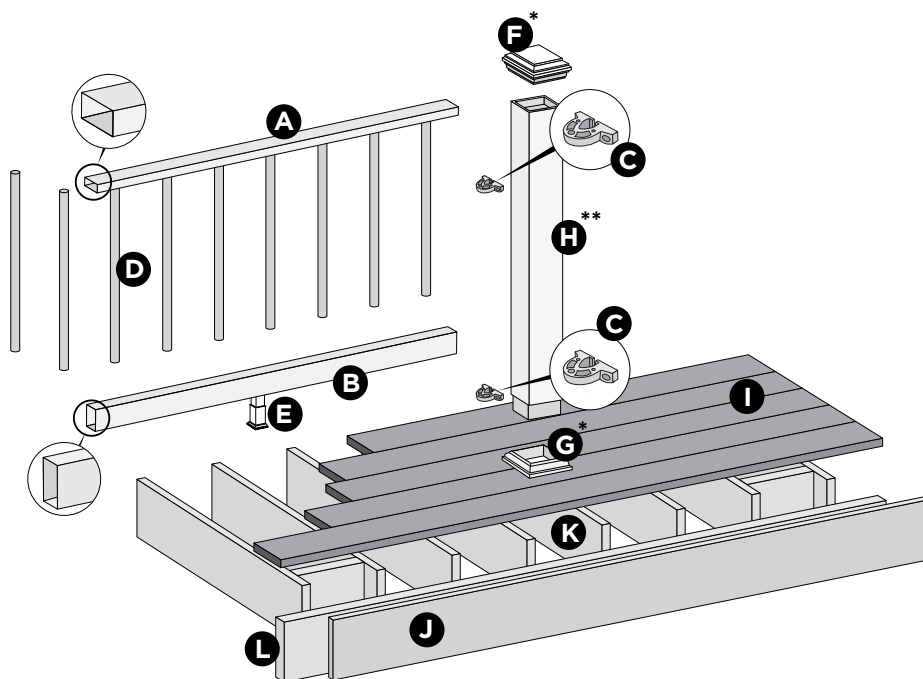
(Also Applies to Trex Select® Railing)

## Installation Instructions



**NOTE: All Enhance Railing lengths are manufactured at CLEAR SPAN dimensions (spanning between space of posts): 72" for 6' clear span. Note that railings are designed to be slightly longer than required to allow for very slight play in post placement – trimming may be required. IT IS VERY IMPORTANT TO MEASURE FIRST.**

### PARTS



- A. Top Rail
- B. Bottom Rail
- C. Brackets
- D. Aluminum Round Balusters
- E. Adjustable Foot Block
- F. Post Sleeve Cap\*
- G. Post Sleeve Skirt\*
- H. Post Sleeve\*\*  
- 4" x 4" x 48"
- I. Trex Decking
- J. Trex Fascia
- K. Code-approved Wood Joist\*\*\*  
- 2" x 8"
- L. Code-approved Wood Rim Joist\*\*\*  
- 2" x 8" or Larger

\* Item not included in the railing kits.

\*\* 4" x 4" post sleeve is designed to fit over 4" x 4" pressure-treated post. Actual size 4.45" x 4.45" x 48"

\*\*\* Actual size 1-1/2" x 7-1/4"

#### DETERMINING BALUSTERS NEEDED

Baluster Type	Per 6' Section
Horizontal Application	15
Stair Application	13

# TREX ENHANCE® RAILING

(Also Applies to Trex Select® Railing)

## Installation Instructions

### HOW TO INSTALL TREX HORIZONTAL RAILING

TREX ENHANCE®

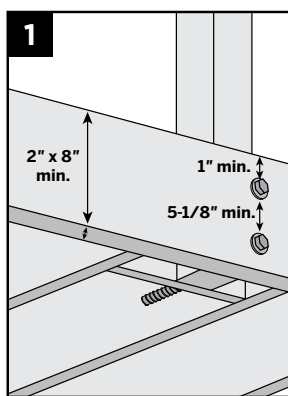
**Read all instructions BEFORE installation.**

**NOTE:** Always consult local building codes for approved post installation.

**Important:** When using 48" post sleeves, measure carefully to allow for clearance of both rail attachment as well as clearance for post cap attachment, and trim these before installing over pressure treated posts. For 36" railing height, post sleeve should be cut at minimum of 40".

#### Installing Pressure-Treated Posts

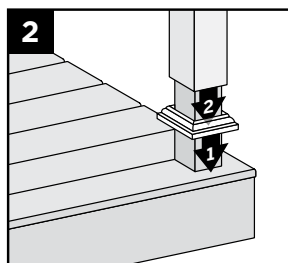
- » Posts are to be installed 6' clear span to accommodate appropriate railing length.
- » Attach posts using 1/2" carriage bolts.
- » Minimum joist size is 2" x 8".
- » Top bolts must be 1" from tops of joists.
- » Bottom bolts must be 5-1/8" from top bolts.



**NOTE:** Blocking **MUST** be added for extra strength.

#### Installing Post Sleeve Skirts and Post Sleeves

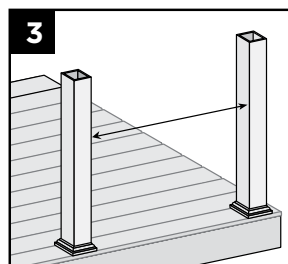
2. Slide post sleeve skirt over post and down to rest on decking surface. Slide post sleeve over post and position inside post sleeve skirt.



**NOTE:** Shims can be used to plumb post sleeves.

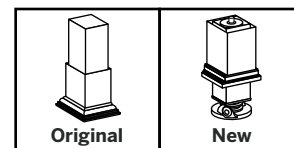
#### Cutting Railings (if required)

3. Measure between posts and cut rails to same length. **When measuring, cut equal lengths from each side of railing allowing a minimum of 1-3/4" on each end from the last baluster hole to the end of the rail.** This will ensure proper baluster and bracket placement and equal spacing of balusters per each railing section.



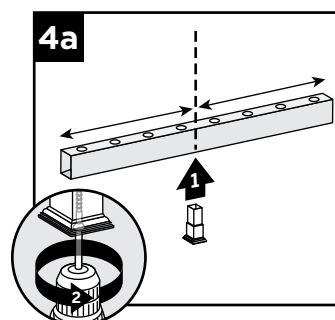
#### IMPORTANT NOTES REGARDING FOOT BLOCK INSTALLATION:

- » Determine which style of foot block is included. Original foot block is a one-piece part that is adjustable. New foot block is a two-piece part with turning base mount.
- » Refer to detailed instructions included with foot block prior to installation of railing section as these include other required steps for proper installation.



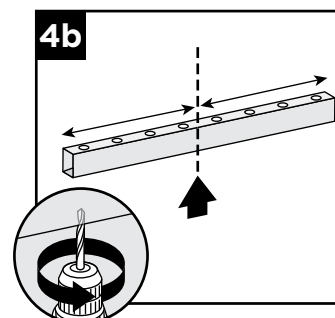
#### If Attaching Original Foot Block to Bottom Rail

- 4a. Invert the bottom railing. Center foot block on bottom rail and attach per original foot block instructions. **DO NOT** extend foot block.



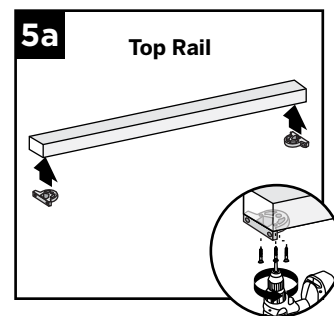
#### If Attaching New Foot Block to Bottom Rail

- 4b. Invert the bottom rail. Center and drill a hole using a 3/16" drill bit. This will be the location for foot block attachment (to be installed last).



#### Attaching Brackets to Rails

- 5a. Position brackets on each end of TOP RAIL on the same side as baluster holes. Attach brackets using three #8-18x1" self-drilling screws (provided).

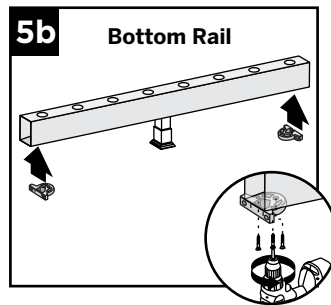


## HOW TO INSTALL TREX HORIZONTAL RAILING/CONTINUED

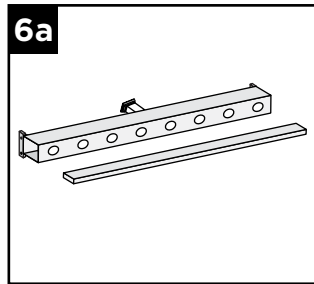
TREX ENHANCE®

### Attaching Brackets to Rails

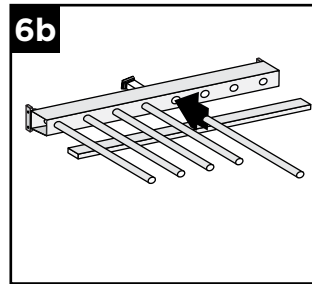
5b. Position brackets on each end of BOTTOM RAIL on the **OPPOSITE SIDE** of the baluster holes. Attach brackets using three #8-18x1" self-drilling screws (*provided*)



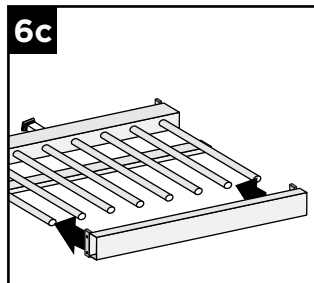
### Assembling Railing Section



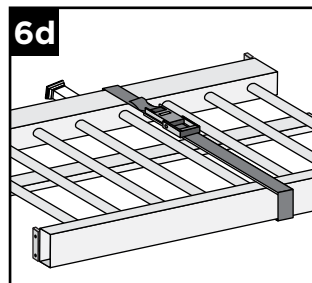
6a. On a clean flat surface lay bottom railing on its side. Make sure to allow enough room for installation of balusters and top rail. Place a scrap piece of 1" decking board running parallel to bottom rail for support when installing balusters.



6b. Insert balusters into bottom rail slots until balusters are fully seated.



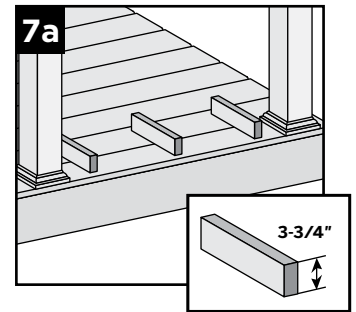
6c. Attach top rail to balusters, feeding each baluster into required slots. Start on one end and work towards the other.



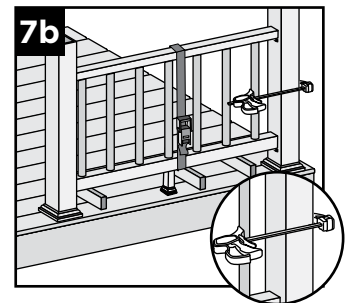
6d. To help temporarily secure the railing section together, place a ratchet strap around the top and bottom rail and tighten until snug. **DO NOT OVERTIGHTEN AS YOU CAN BEND THE RAILING.**

### Installing Railing Section to Posts

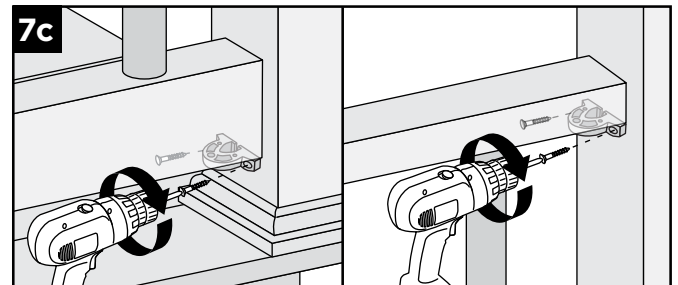
7a. Using scrap material (i.e. 2 x 4s, decking boards, etc.) cut at least three support blocks at 3-3/4" in height. Place one each on decking surface beside each post and one near center of span.



7b. Lift secured railing section up, and **CENTER** this section in between the spanned posts on pre-positioned support blocks.



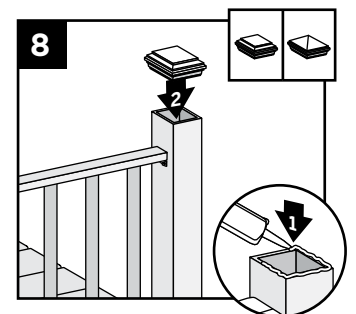
**NOTE:** To help stabilize railing section use a quick-grip clamp (or other type of clamp) and clamp the first baluster to post sleeve. (**DO NOT OVERTIGHTEN CLAMP.**)



7c. Install both bottom and top brackets on each side to post using two #8-10x2" wood screws (*provided*). For best results, set drill to low speed when installing these screws.

### Attaching Post Caps and Installing New Foot Block

8. Secure post caps with silicone or PVC adhesive. Attach new foot block per foot block instructions.



**NOTE:** Clean up any excess adhesive before drying.

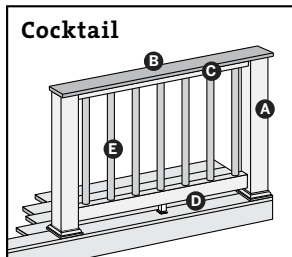
# TREX ENHANCE® RAILING

(Also Applies to Trex Select® Railing)

## Installation Instructions

### HOW TO INSTALL COCKTAIL RAILING

TREX ENHANCE®



Cocktail

Post sleeves **WILL NEED TO BE CUT.**

A. Pressure-treated post with Trex Transcend post sleeve

**NOTE:** » Only for use with 4" x 4" (102 mm x 102 mm) post sleeve.  
» Trex post mounts or joist mount posts cannot be Enhance cocktail design.

B. Deck board top rail.

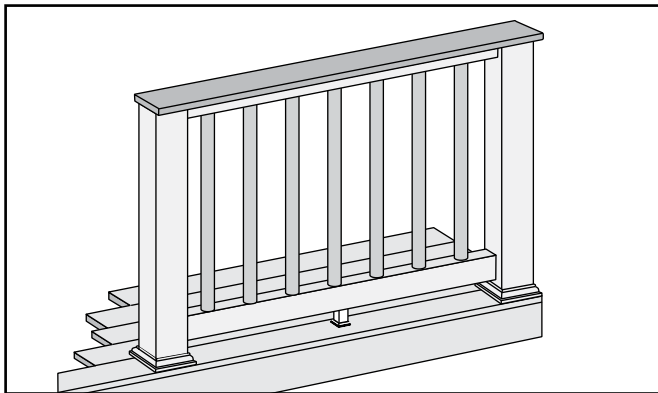
**NOTES:** » Contour and Escapes cannot be used  
» Deck boards will need to be cut to fit each rail span

C. Enhance top rail

D. Enhance bottom rail

E. Enhance balusters

**POST  
SLEEVES  
WILL  
NEED TO  
BE CUT**



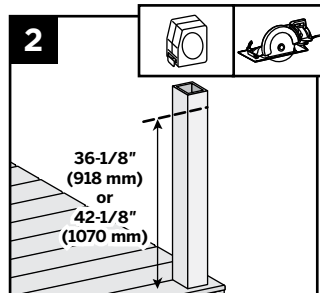
**Important: ONLY** use with pressure treated 4 x 4 post (3.5" nominal square) and 4" x 4" (102 mm x 102 mm) post sleeve. Trex Post Mounts or Joist Mount Posts cannot be used with Enhance Cocktail railing.

#### 1. Installing Pressure-Treated Posts, Post Sleeve Skirts and Post Sleeves

See instructions on page 2.

#### Cutting Post and Post Sleeve

2. Mark and cut post and post sleeve measuring from deck surface:
- » 36-1/8" (918 mm) for 36" (914 mm) height.
  - » 42-1/8" (1070 mm) for 42" (1067 mm) height.



#### 3. Cutting Railings

See instructions on page 2.

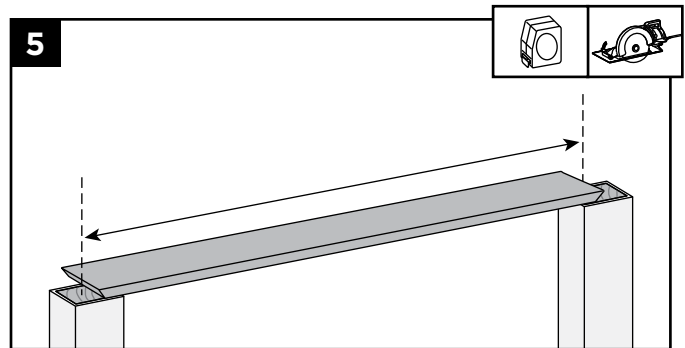
#### 4. Attaching Foot Block to Bottom Railing

See instructions on page 2.

#### NOTES:

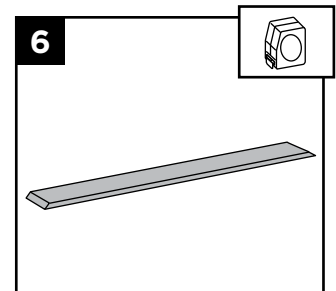
- » If installing in weather below 40°F (4.5°C), leave 1/8" (3 mm) gap between deck boards.
- » Deck boards can overhang end of last post maximum 1/2" (13 mm).

#### Cutting Deck Board



5. Cut deck boards to appropriate length of railing span, remembering to include extra space on each side of the deck board to allow for attachment to the post. Decking boards must cover 1/2 of the pressure-treated post to allow this to be fastened later.

6. Place inverted deck board (place top side of deck board down) on clean, flat surface. (**DO NOT** use Escapes, or Contour deck boards for top rail.)



4

Have Questions?  
1-800-BUY-TREX

**NOTE:** Construction methods are always improving. Please ensure you have the most up-to-date installation instructions by visiting: [trex.com](http://trex.com)

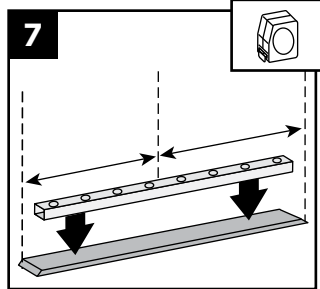
TER-0317

## HOW TO INSTALL COCKTAIL RAILING/CONTINUED

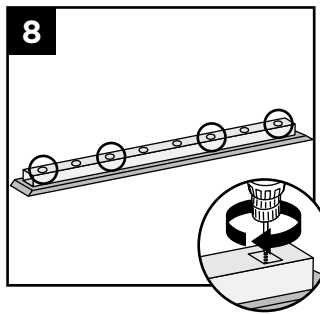
TREX ENHANCE®

### Attaching Deck Board to Enhance Top Rail

7. Place inverted Enhance top rail (orient properly so baluster holes are shown top side up), on the deck board, centered in both directions to allow final attachment to post.



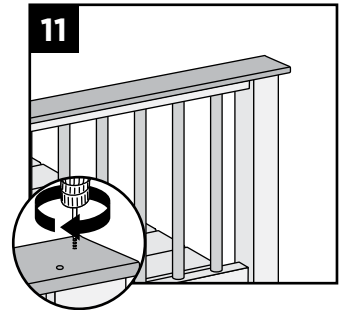
8. Secure deck board to Select top rail with #8-3/4" truss-head self-drilling screws (not provided) approx. every 16" on center. Screws are to be installed inside of the baluster holes into the decking board. **DO NOT** overtighten.



**NOTE:** A long drill bit will be required to fit inside the baluster holes.

9. **Assembling Railing Sections**  
See instructions on page 3.
10. **Installing Railing Sections to Posts**  
See instructions on page 3.

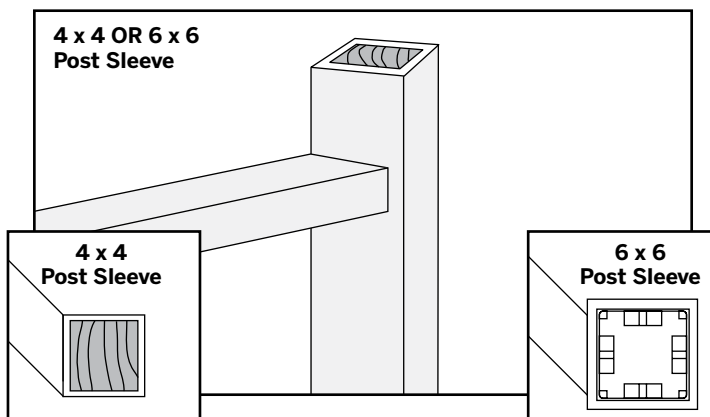
11. **Attaching Deck Board to Posts**  
Attach boards on each post with Trex recommended composite screws (quantity of 2 per each board end).



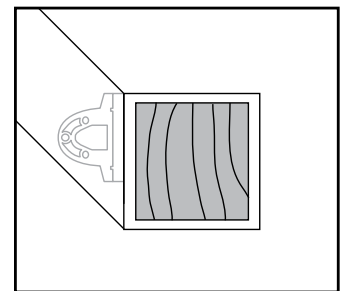
## HOW TO INSTALL ON-AN-ANGLE RAILING

TREX ENHANCE®

**NOTE:** Brackets are designed to be installed up to a 45° angle.



- » Both 4" x 4" (102 mm x 102 mm) or 6" x 6" (152 mm x 152 mm) post sleeves work well for angles up to 45 degrees. Bottom rail brackets may need to be slightly offset to one side in order to fit properly to hold rail in place. Measure and mark first before attachment of bracket to rail to ensure bottom rail remains parallel to upper rail.



# TREX ENHANCE® RAILING

(Also Applies to Trex Select® Railing)

## Installation Instructions

### HOW TO INSTALL TREX STAIR RAILING

TREX ENHANCE®

Read all instructions BEFORE installation.

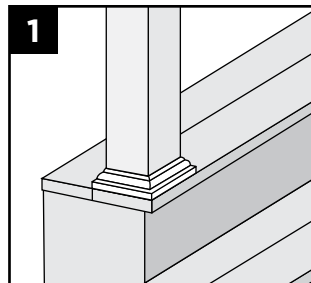
**IMPORTANT NOTE: POST TO POST SPAN WILL BE LESS THAN 6'. PRIOR TO INSTALLING POSTS CALCULATE POST TO POST SPAN USING A MAXIMUM RAIL LENGTH OF 6' AND THE ANGLE (32°-37°) AT WHICH THE RAILS WILL BE INSTALLED. DO NOT INSTALL STAIR POSTS AT 6' SPAN, AS STAIR RAILINGS WILL THEN BE TOO SHORT.**

#### NOTES:

- » Requires use of Trex Enhance Stair Rail Kit.
- » All Enhance Stair Railings work **ONLY WITH STAIR SLOPES OF 32°-37°**.

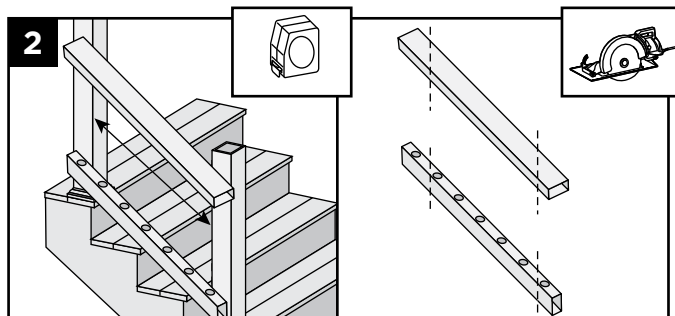
#### Installing Posts, Post Sleeve Skirts, and Post Sleeves for Stair Rails

1. Install posts, post sleeve skirts, and post sleeves according to standard railing instructions.



- » In most cases, a longer post and post sleeve will be needed on the lower section of stair rail to accommodate stair angle. **DO NOT** cut this post/post sleeve until desired height is determined.
- » Make sure top and bottom posts for stairs are installed at nose of each tread.

#### Measuring and Cutting Railings

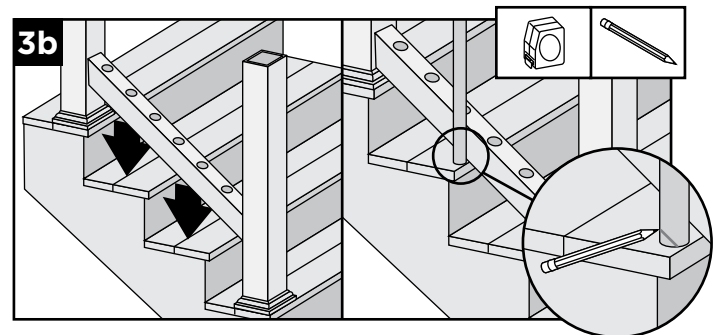
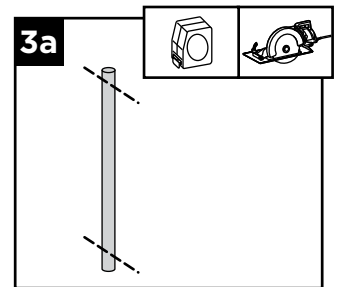


2. Set railing along the nose of the stair treads, making sure baluster holes are vertically aligned and mark line at each intersection. **When measuring, cut equal lengths from each side of railing allowing a minimum of 2" on each end from the last baluster hole to the end of the rail.** This will ensure proper baluster and bracket placement and equal spacing of balusters per each railing section.

6

#### Cutting Balusters on Angle (OPTIONAL)

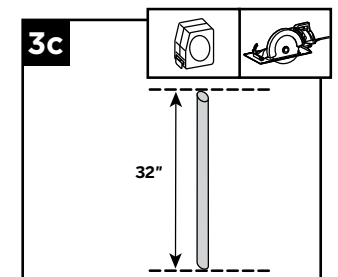
- 3a. In order for balusters to seat properly (depending on the angle of the stair railing), the balusters may need to be trimmed to match the angle of the bottom and top railing.



- 3b. Set bottom railing on nose of stair treads and set baluster at 90° on the outside of the railing, mark and measure the angle.

**NOTE:** Measure, mark and cut a scrap board to ensure you have proper angle **BEFORE** cutting balusters on angle.

- 3c. Cut the **VERY END** of baluster, both top and bottom, making sure that point-to-point measurement of the baluster remains at 32".



#### IMPORTANT NOTES REGARDING FOOT BLOCK INSTALLATION:

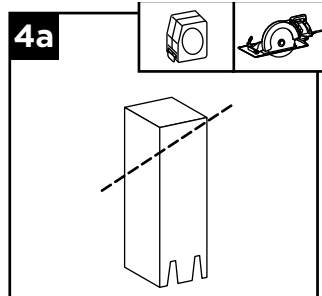
- » Determine which style of foot block is included per information shown previously.
- » Refer to detailed instructions included with foot block prior to installation to stair railing section. These include other required steps for proper installation.

## HOW TO INSTALL TREX STAIR RAILING/CONTINUED

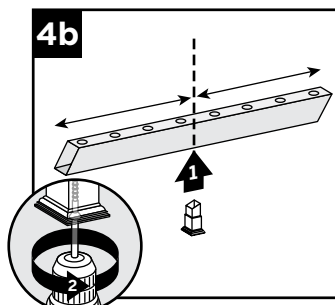
TREX ENHANCE®

### If Attaching Original Foot Block to Bottom Rail

4a. For stair applications, cut the section of foot block at an angle to match rail. Refer to foot block instructions for specific information on how to do this.

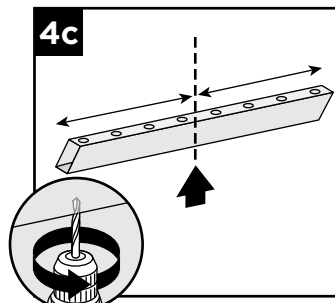


4b. Invert bottom rail. Center foot block on bottom rail and attach per original foot block instructions. **DO NOT** extend foot block.



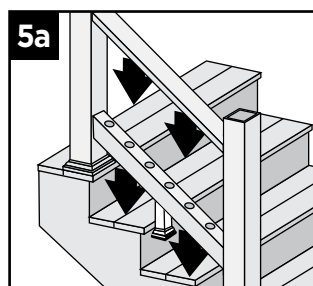
### If Attaching New Foot Block to Bottom Stair Rail

4c. Invert the bottom stair rail. Center and drill a hole using a 3/16" drill bit. This will be the location for foot block (to be installed last).



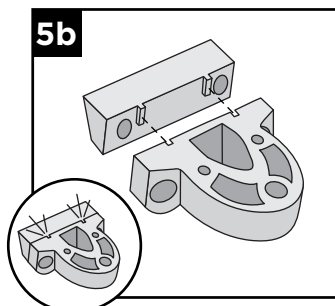
### Attachment of Brackets to Railings

5a. Check fit for both top and bottom railings in designated positions for location onto posts. Remove railings.

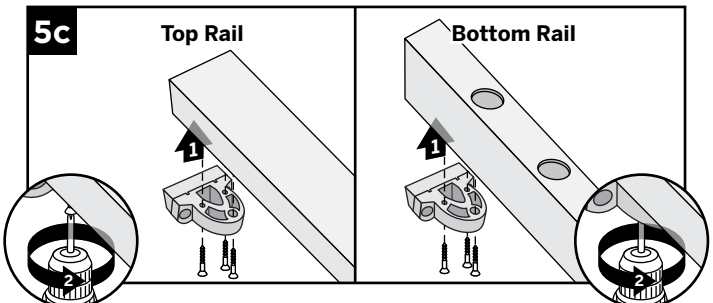


### Upper Stair Post Locations

5b. Snap the top stair adaptor bracket (labeled TOP) to the standard bracket. Repeat for remaining bracket.



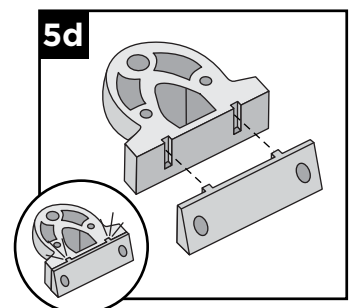
### Upper Stair Post Locations



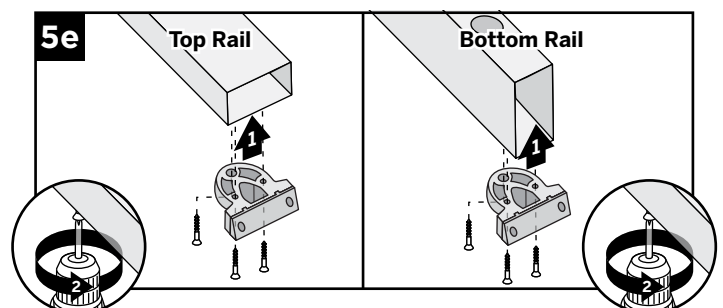
5c. On the TOP RAIL, attach the assembled top stair bracket to the side with baluster holes. On the BOTTOM RAIL, attach the assembled top stair bracket to the OPPOSITE SIDE of the baluster holes. Attach both brackets using three #8-18x1" self-drilling screws (provided).

### Lower Stair Post Locations

5d. Snap the bottom stair adaptor bracket (labeled BOTTOM) to the standard bracket. Repeat for remaining bracket.



### Lower Stair Post Locations



5e. On the TOP RAIL, attach the assembled bottom stair bracket to the side with baluster holes. On the BOTTOM RAIL, attach the assembled bottom stair bracket to the OPPOSITE SIDE of the baluster holes. Attach both brackets using three #8-18x1" self-drilling screws (provided).

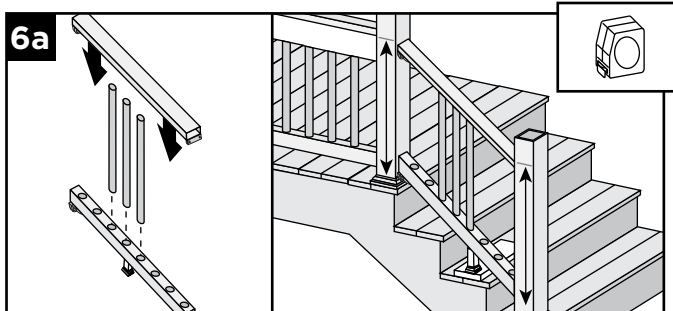
# TREX ENHANCE® RAILING

## Installation Instructions

### HOW TO INSTALL TREX STAIR RAILING/CONTINUED

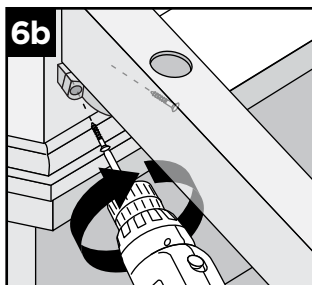
TREX ENHANCE®

#### Attachment of Bottom Rail to Post

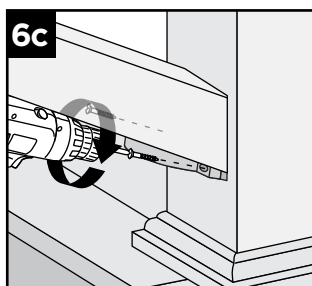


6a. Assemble a few of the balusters into the bottom and top railings (make sure balusters are setting at 90°) and set this on scrap material clearing the stair treads to determine where bracket locations need to be. Measure to make sure that the bottom railing will clear the stair treads and the top railing will be aligned with horizontal railing (remember in most cases, a longer post and post sleeve will be needed on the lower section of stair rail to accommodate stair angle).

6b. After locating appropriate position for bottom rail remove top rail and balusters and attach bottom rail stair bracket to upper post using two #8-10x3" wood screws (*provided*).

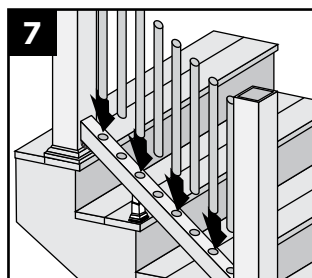


6c. Attach bottom stair rail stair bracket to lower post using two #8-10x3" wood screws (*provided*). For best results set drill to low speed when installing these screws.



#### Install Balusters

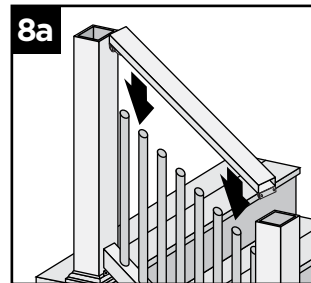
7. Slide balusters into bottom rail until balusters are fully seated.



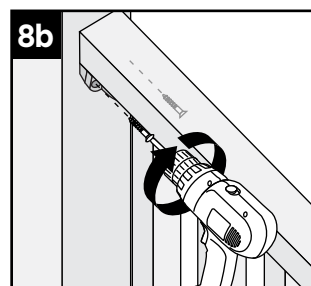
8

#### Attachment of Top Rail to Post

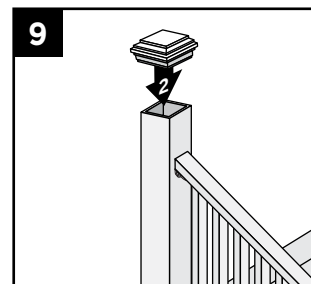
8a. Place top rail onto balusters, allowing the top rail to rest on the surface of the balusters.



8b. Attach top stair rail bracket to upper post using two #8-10x3" screws (*provided*). For best results set drill to low speed when installing these screws.



8c. Attach top stair rail bracket to lower post using two #8-10x3" screws (*provided*). For best results set drill to low speed when installing these screws.



#### Attaching Post Caps and Installing New Foot Block

9. Secure post caps with silicone or PVC adhesive. Attach new foot block per foot block instructions.

**NOTE:** Clean-up any excess adhesive before drying.

